

# Field Care of Trophies

## FISH

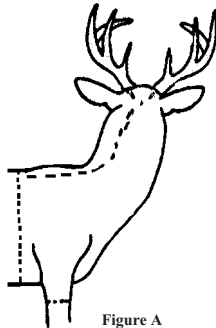
We prefer to receive fish unskinned. Slick fins down along the body and place in plastic and freeze as flat as possible. If entrails must be removed, cut the fish open on the side, preserving the show or perfect side. Never cut the fish up the belly or remove the gills.

## BIRDS

Do not remove the entrails. Tuck the head under one wing and freeze solid as soon as possible. Please note any broken bones (wings, leg, etc.).

## GAME HEADS

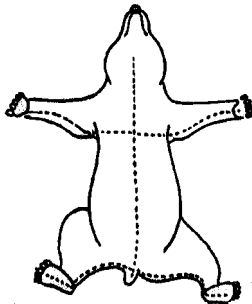
- **Never cut the throat.** This cuts the hair and is impossible to repair.
  - Cut around the body **behind** the front legs.
- (Fig. A)
- **Skin down** to the base of the head and cut off neck.
  - **Bring into the shop as soon as possible** or freeze solid until time is more convenient.



## RUGS & LIFESIZE

**!!! IMPORTANT !!!** Make sure all cuts are straight and centered.

- **Start at the throat** and cut exactly down the center of the body to the tail.
- **Leg cuts** are made from the center of the pad down the under-side of the legs to the center cut.
- **Skin the legs** and sever feet at the ankle joint, leaving the feet intact.
- **Skin out the body** and detach head from carcass at the neck.
- **If freezer service is available**, freeze hide solid and leave the delicate skinning to us.



---

Upon notification of completion, *specimen* must be picked up and **paid in full** within 30 days, or *specimen* will become property of **TRAILS END TAXIDERMY**. Should customer want to retrieve *specimen* after 30 days, storage fee will be assessed. Storage fees are as follows: Deer \$25.00, All Bear \$50.00, All Birds \$20.00, All Fish \$15.00, Large Big Game \$75.00, Tanned Hides \$20.00, and Misc. \$10.00, these will be monthly charges.

*Have a nice day!* 😊

---

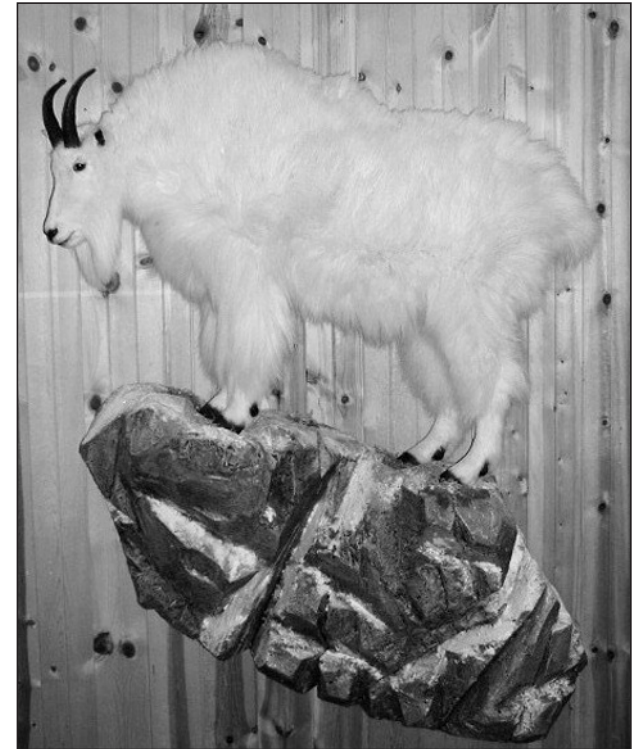
*For the Highest Quality  
Taxidermy in the St. Cloud Area,  
bring your critter to "Trails End"  
located in Rice.*

**393-BUCK  
2825**

# Trails End Taxidermy

Visit us at  
[www.trailsendtaxidermy.org](http://www.trailsendtaxidermy.org)

Updated September 1, 2018



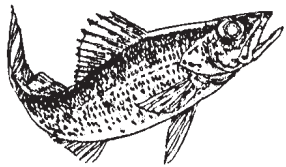
John G. Hlebaen



Located in Rice • 310 West Main Street

**(320) 393-2825**

[JAKE2825@jetup.net](mailto:JAKE2825@jetup.net)



**FISH**  
(Flat Rate)

Bass (Smallmouth, Largemouth) .....	each \$300
Brook, Brown, Rainbow Trout.....	Quote
Crappie each.....	\$175
Lake Trout & King Salmon.....	Quote
Muskie.....	\$650
Northern .....	\$475
Perch each .....	\$250
Sunfish each .....	\$175
Walleye.....	\$375

Custom Dioramas (nat'l. base) .....\$175 and up  
Graphite Reproductions starts at \$18 per inch  
( \$125 minimum)

**SOME ADVANTAGES  
OUR SERVICE OFFERS**

- Exciting positions of your choice:  
Tail-down swimming "S" Curve (Driftwood only)  
Fighting up "S" Curve (Driftwood only)
- Original gill and all natural throat
- Quality guaranteed

**GAME HEADS**  
(Full Shoulder)



Antelope .....	\$575
Bison .....	\$1,800
Black Bear (closed mouth).....	\$575
Black Bear (open mouth) .....	\$775
Caribou.....	\$950
Elk (bugling) .....	\$1,350
Elk .....	\$1,100
Moose (Over 50") .....	Start at \$1500
Moose (Under 50") .....	\$1,100
Mouflon.....	\$575
Mountain Goat .....	\$650
Mule Deer .....	\$575
Sheep (all) .....	\$750
Whitetail Deer .....	\$575

**ANTLERS  
&  
HORNS**



Antelope .....	\$100
Deer.....	\$100
Elk.....	Start at \$150
Moose.....	Start at \$175
European Skull Mount .....	Start at \$175

(We buy capes and antlers)

**BIRDS**



Canvasback .....	\$350
Ducks (all).....	\$300
Geese(all) .....	\$800
Grouse (all) .....	\$275
Mute Swan (Tundra) .....	\$1,500
Pheasant .....	\$275
Ptarmigan .....	\$275
Quail.....	\$275
Turkey .....	\$850
Turkey Shoulder Mounts .....	\$425
Turkey Tails .....	\$175
Woodcock.....	\$275

(Custom natural bases available)

**RUGS**

Badger .....	\$850
Bear (all) .....	\$200 per ft.
Bobcat .....	\$850
Coyote .....	\$850
Fox (all).....	\$850
Lynx .....	\$850
Raccoon.....	\$850
Timber Wolf.....	\$1,100
Tanning .....	Quote

*Specimens that require additional fleshing or skinning will be subject to a slight additional charge.*

*Due to the fact that hides and skins may be in unprime or poor condition, all tanning is done at the owner's risk..*

**LIFESIZE BIG GAME**  
Custom Scenery Bases are NOT Included

Antelope.....	\$2,300
Black Bear.....	Start at \$1,800
Black Bear (1/2 Body) <sup>300lbs &amp; under</sup> .....	Start at \$1,200
Black Bear (1/2 Body) <sup>300lbs &amp; over</sup> .....	Start at \$1,500
Caribou.....	\$3,500
Grizzly, Brown Bear .....	Start at \$5,700
Mouflon.....	\$2,400
Mountain Goat .....	\$2,800
Mountain Lion .....	\$2,800
Mule Deer .....	\$2,800
Sheep.....	\$3,800
Timber Wolf.....	\$1,800
Whitetail Deer.....	\$2,800

**LIFESIZE SMALL GAME**  
Includes Habitat Base

Beaver .....	Start at \$920
Bobcat .....	\$920
Coyote .....	\$1,050
Fisher.....	\$920
Fox (all).....	\$920
Lynx .....	\$850
Mink.....	\$600
Otter .....	\$920
Pine Martin.....	\$600
Raccoon.....	\$920
Squirrel.....	\$550
W.T. Fawns (permit required)* .....	Lying \$900
Wolverine .....	\$800

*\*Fawns will be done under glass only.  
This price does not include glass.*

*Custom poses and poses requiring resculpting  
will be subject to additional charges.*

